

PART OF S.W. 1/4 OF SECTION 9, T.6N.,R.1W., S.L.B.&M.

TAXING UNIT: 23, 25, 337

IN OGDEN CITY AND WEBER COUNTY

SCALE 1" = 100'

SEE PAGE 45

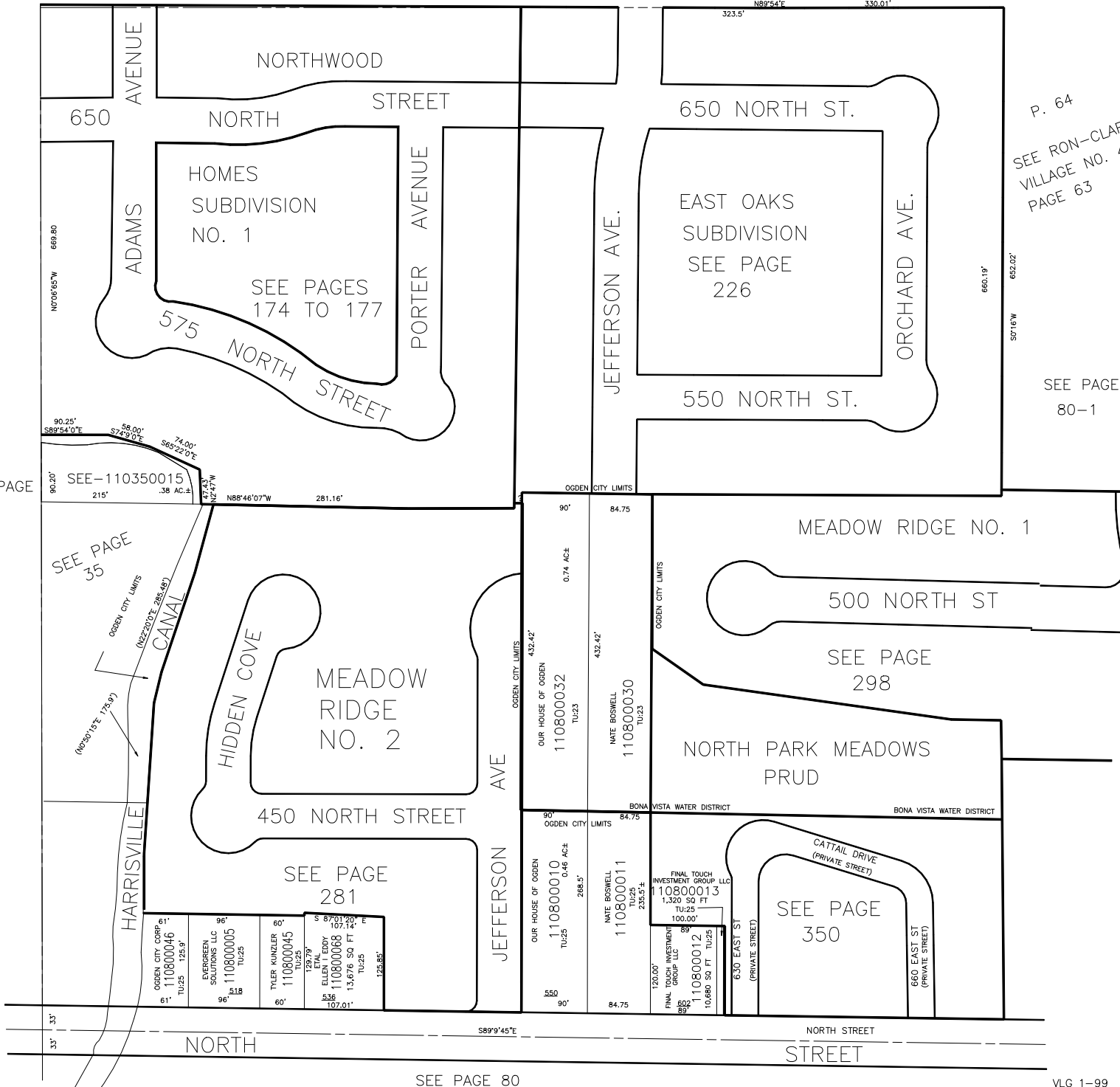
SEE PAGE 35

P. 64
SEE RON-CLARE
VILLAGE NO. 4
PAGE 63

SEE PAGE 80-1

11

VLG 1-99



SEE PAGE 80